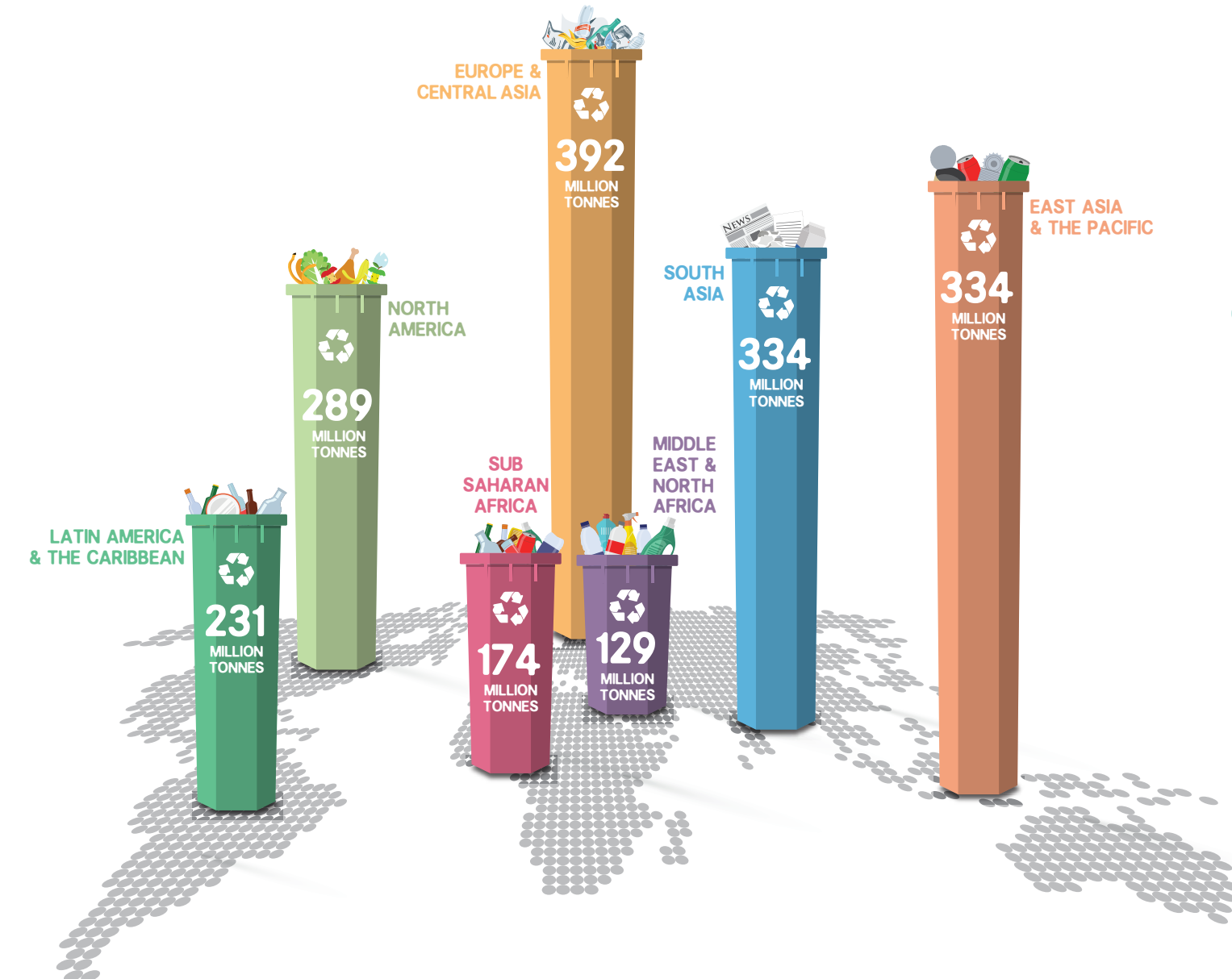


MUNICIPAL SOLID WASTE MANAGEMENT

Municipal Solid Waste Management is a global issue. The rubbish and waste produced by individuals, communities, factories, businesses, markets and institutions grows daily.

UN-Habitat is scaling up its support to cities to implement cost effective, efficient systems to ensure we reduce, collect and properly dispose of waste.



MOVING FORWARD

Approaches to municipal solid waste management should build on the **strengths of different cities which can learn from each other** by developing mechanisms to share experiences and good practices.



The **integrated roles** of the public, private and informal sectors and micro-enterprises are critical to achieving high rates of recycling.

Local governments, civil society and education institutions should work together to raise public awareness about the need for solid waste management. Financing, policy and planning advice can support cities to develop efficient waste management systems.



The global consumption of plastics must be reduced through comprehensive waste reduction and recycling programmes.

TAKE THE PLEDGE

PLAY A PART AND TAKE THE FOLLOWING ACTIONS TO IMPROVE MUNICIPAL SOLID WASTE MANAGEMENT

RETHINK REDUCE

Promote a shift in mindset of people from linear make-use-dispose model to a circular model that considers waste as a resource.

Cut back on the amount of waste we produce.

REUSE

Promote reuse of our waste so that we don't have to throw it out.

REFUSE

Avoid waste by minimizing production of single-use or disposable items, including plastic water bottles, plastic straws, plastic cutlery and disposable shopping bags, among others.

RECYCLE

Sort our waste and support recycling to reduce the use of raw materials, protect the environment and create jobs.

#WASTEWISECITIES

www.unhabitat.org